

chapter PULSE

An Individual Chapter Publication
EXECUTIVE WOMEN INTERNATIONAL®

Chartered December 1969

PHILADELPHIA

April 2006

MEMBER FIRMS

Alfa Laval Biokinetics Inc.

BPG Properties, Ltd.

Bowhaus Design Groupe, LLC

Carey Limousine

Contemporary Staffing Solutions

Cradle of Liberty Council

Boy Scouts of America

Firstrust Bank

Greater Philadelphia Cares

Hepburn, Willcox, Hamilton &
Putnam, LLP

Marriott Foundation

New York Life

Philadelphia Convention & Visitors
Bureau

Philadelphia Hospitality, Inc.

Pure-N-Simple Productions

Turner Construction Company

The Union League

SUSTAINING MEMBERS

Helen Cyzio

Cleta Higgins

Terri Maloney

Jane Sullivan

Executive Women International®

Philadelphia Chapter

April Membership Meeting

Presentation by Dana Lightman, Ph.D.

POWER OPTIMISM™

Dana, an accomplished motivational keynote speaker and trainer specializing in the field of optimism and positive psychology, brings over 20 years experience as a presenter, psychotherapist, coach and educator. She is a member of the National Speakers Association, our EWI Speakers Bureau and has been a frequent guest on radio and television.

Date: Tuesday, April 18, 2006

Time: 6:00 pm

Location: Radisson-Warwick Plaza Hotel
1701 Locust Street
Philadelphia, PA

RSVP: Marie Gallagher
215-587-5574 or
gallagherm@unionleague.org

IN THIS ISSUE

Calendar of Events	2
President's Message	2
New Members	3
Chapter Meeting Schedule	3
Report on 2006 Silent Auction	4
Academy Online	5
Chapter Officers & Directors	6
Corporate Board of Directors	6
Postings	7
2006 Silent Auction (Cont'd)	7
Publisher's Corner	7

CALENDAR OF EVENTS

Chapter Calendar

Our Chapter Calendar is taking on an expanded format. Program Director Marie Gallagher is doing her usual fine job in lining up what we hope you will agree are exceptional programs that you won't want to miss. See Pages 3 and 4 for subjects, dates and locations.

Chapter Board Meetings are held on the first Tuesday of the Month at Alfa Laval Biokinetics offices, 1635 Market Street, Suite 1500, Philadelphia, beginning at 5:30. All members are welcome to attend.

Corporate Calendar

**Professional Development Teleseminar
Tuesday April 4, 2006
8 pm Eastern, 7 pm Central, 6 pm
Mountain, 5 pm Pacific**

**"Building Relationships:
The 7 Secrets for Success and Savvy
Networking!"**

Teleseminars are Corporate sponsored and free to all members. You must pre-register on line at www.executivewomen.org (click on Professional Development tab) or by calling Corporate Headquarters.

Apr 20-22 Spring Conference – Memphis
Academy of Leadership Module 1 –
Volunteer Leadership

May 18-20 Spring Conference – Omaha
Academy of Leadership Module 2 –
The Diverse Communicator

EWI® MISSION AND VISION MISSION

Executive Women International® is an organization which brings together key individuals from diverse businesses for the purpose of:

- Promoting member firms
- Enhancing personal and professional development, and
- Encouraging community involvement

VISION

*TO BE THE LEADING CONNECTION FOR
BUSINESS PROFESSIONALS*

PRESIDENT'S MESSAGE

Dear Members,

I am so excited for our upcoming year. I want to thank the board for their hard work and dedication in putting together such an impressive program schedule, which I am sure every member can benefit from. As EWI Philadelphia's new President, I would like to also thank Linda McArdle for the outstanding leadership over the past few months. Linda, I will try my best to follow in your footsteps!

Please be sure to mark you calendar for our 2nd annual golf clinic on May 15th at Springfield Country Club. Our inaugural outing held last May proved a huge success and we have even higher expectations for this year. Please start the chatter with your friends and coworkers!

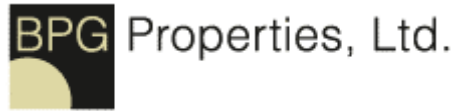
Everyone is invited! What a great way to play golf, network, and it's a perfect excuse to get out of the office!

Our Corporate EWI is also hard at work. There is a free tele-seminar this month on relationships and networking, "Building Relationships: The 7 Secrets for Success and Savvy Networking", on April 4th at 8:00pm. To register go to the corporate website Leadership Circle <http://www.executivewomen.org>. Please take advantage of this free learning experience.

As for new members... all I can say is – WOW! Thank you to our members for the great referrals for invitations for new members to join. Invite a business partner or friend to our next meeting to show them all of the advantages of being an EWI member- appealing programs, local and national networking opportunities, business development, and not to mention the wonderful friendships that come out of EWI.

Christy

NEW MEMBERS



Please join us in welcoming BPG Properties, Ltd. to our Chapter. With Philadelphia offices in Center Square, BPG Properties is a real estate operator with a proven track record in the acquisition, development and investment management of all major property types throughout the United States. Cheryl Wamsley, Executive Assistant to President/CEO Daniel M. DeLella, will serve as representative.

Welcome Cheryl

EWI Fellows Program

Awards

Five \$1,000 awards for Undergraduate Degrees

Four \$2,500 awards for Graduate and Postgraduate Degrees

Eligibility

Three years as an EWI representative

Five years of work experience

Firm has paid the B/D/DP Assessment

Applications Due April 30th

Application and further details at executivewomen.org.

CHAPTER MEETING SCHEDULE



April 18 Radisson Warwick Plaza Hotel
6:00 pm 1701 Locust Street
Philadelphia, PA

Power Optimism Program™
Developing Leadership with a Positive Edge

Dana Lightman, Ph.D., developed this innovative program that teaches positive strategies to replace negative patterns. A psychotherapist, educator, author and speaker, Dana comes to us through the Corporate speakers bureau. You won't want to miss this meeting.



May 15 Chapter Annual Golf Clinic
11:00 am Springfield Country Club

Our inaugural clinic held last May met with much success and we received several requests for a repeat. This event begins with a networking luncheon followed by instruction in golf etiquette, the drive, the chip and the putt by golf professionals. This year, we will get to play an entire hole versus just the driving range.



June 20 Peg O'Neill
6:00 pm

In this program, Peg will speak to us on building relationships in both our personal and professional life. Peg, as an author, educator, consultant and coach, and often referred to as Mrs. W.I.N-W.I.N!, is sure to provide sought-after tips on expanding our present relationships as well as building new ones.

CHAPTER MEETING SCHEDULE

(Continued)

July No Meeting



August 15 Alberts Café & Grille
6:00 pm 3180 Grant Avenue
Philadelphia, PA

Annual ASIST Scholarship Award

We again look forward to this annual event where our Chapter has the pleasure of awarding a \$2,000 scholarship to a deserving area student. Your Ways & Means Committee has begun the selection process that will lead to what is certainly the highlight of our year.



Sept 19 Positano Coast

Business Meeting/Installation of 2006/07 Board of Directors



Oct 21 2006 Chapter Reading Rally

Plans call for us to again participate in member firm Greater Philadelphia Cares™ "Philadelphia Cares Day"

Nov 21 Tentative – The Honorable Lynn Abraham
District Attorney
City of Philadelphia

Dec 19 Holiday Celebration
Tentative – Tour of Philadelphia Art Museum

2006 Silent Auction

We are happy to report this year's auction proved to be another outstanding event, raising funds of over \$1,800 toward our 2006 ASIST Scholarship.

The Monte Carlo Living Room again proved an exceptional venue. The relaxed atmosphere of the Living Room, coupled with the exceptional menu, only added to making our evening special. A special treat included in this year's menu was the tiramisu for dessert.

Many, many fine items were donated (see listing on Page xx) and we would like to take this opportunity to thank both members and guests alike for their generosity and contributing to our success.

Of course, the conclusion of the annual Silent Auction leads to the beginning of our **ASIST Award** scheduled for August and preparations for this are underway. Letters to area colleges are being sent requesting identification of candidates. Applications are then sent to those candidates with final judging taking place during May. Our candidate is then entered into competition at the Corporate Level for additional scholarship money.

Any members wishing to assist in this effort, please contact Lynn Fraser, Ways & Means Director at (215) 568-5630 or lynn.fraser@contemporarystaffing.com.

Also contributing to this year's B/C/DP account will be our Golf Clinic on May 15th at the Springfield Country Club mentioned in Christy's message. You may have seen our ad in the March 24 and 31 issues of the "Philadelphia Business Journal." (If you have, please note that the start time for our golf clinic is 12:00 noon and not 11:00 am as listed in the ads.)

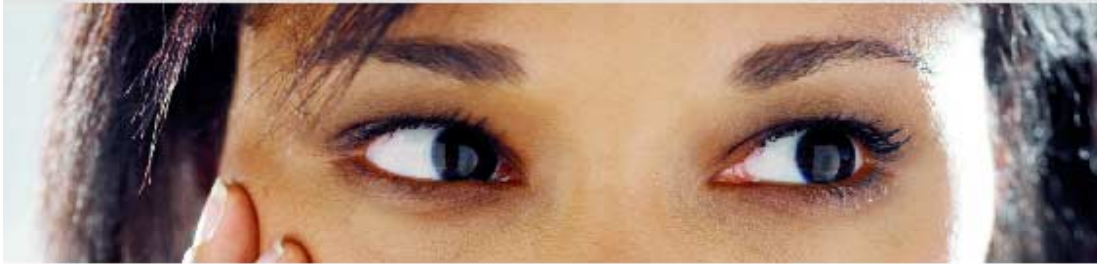
Along these lines, let us not forget our new –

EWI Fellows Program

Fellowships Assisting EWI Representatives

As an EWI Representative, partner with the EWI Fellows Program and B/C/DP to earn financial assistance for your educational pursuits and ongoing personal and professional development (see Page 3 for further details).

Q! How can I gain effective, real-time leadership skills without leaving my office?



EXECUTIVE WOMEN INTERNATIONAL® **ACADEMY ONLINE** The Certified Professional Leaders Program

AVAILABLE TO EWI REPRESENTATIVES AND EMPLOYEES OF MEMBER FIRMS

Academy Online, comprised of cutting-edge e-learning classes created by experts in the field of leadership development, will put you on the fast track to excellence. And you won't even have to leave your office! **Make this investment in your future today.**

**Cost is \$299 for 15-course Suite (15 hours).
Sign up online at www.executivewomen.org.
Seating is limited; registration is ongoing
while availability lasts.**

15-Class Suite Offered:

American Management Association

- A Practical Guide to Time Management*
- Effective Listening Skills*
- Managing Employee Conflict*
- Managing Personal Stress*
- Negotiate to Win*

The Conference Board

- An Introduction to Managing Change*
- How to Build High Performance Teams*

Peter Drucker

- Driving Change*
- Effective Decision Making*
- Knowledge Worker Productivity*
- Managing Oneself*
- Managing the Boss*
- People Decisions*

Leadership in Times of Stress and Change

Tom Peters

- Women: The New Economy's Top Opportunity*

For detailed class descriptions, go to executivewomen.org.
For additional information, call the EWI Corporate Office at 801.355.2800.

Program endorsed by:



Program hosted by:



**OFFICERS AND
DIRECTORS**

PRESIDENT

Christy Barilotti
New York Life
610-660-7600
clBarilotti@ft.newyorklife.com

TREASURER

Isis Petrie
PureNSimple Productions
856-625-6484
ipetrie@purnsimpleproductions.com

PROGRAM DIRECTOR

Marie Gallagher
The Union League
215.587.5574
gallagherm@unionleague.org

MEMBERSHIP DIRECTOR

Robin Lane
Alfa Laval Biokinetics Inc.
215.656.2538
Cell Phone: 215.432.6053
robin.lane@alfalaval.com

PUBLICATIONS DIRECTOR

Robin Lane
Alfa Laval Biokinetics Inc.
215.656.2538
Cell Phone: 215.432.6053
robin.lane@alfalaval.com

WAYS & MEANS DIRECTOR

Lynn Fraser
Contemporary Staffing Solutions
215-568-5630
lynn.fraster@contemporarystaffing.com

SERGEANT-AT-ARMS

Marie Gallagher
The Union League
215.587.5574
gallagherm@unionleague.org

**2005-2006 CORPORATE
BOARD OF DIRECTORS**

President

Debbie Taylor – Dallas Chapter
debbie.taylor@siemens.com

Vice President/President/Elect

Judy Russell – Tulsa Chapter
jrussell@oneok.com

Secretary/Treasurer

Diana Larsen – Orlando Chapter
dlarsen@gray-robinson.com

Membership Priority Program Director

Darlene Banogon – San Diego Chapter
dbanogon@myisland.com

Membership Director

Karen Kuhn – Washington, DC Chapter
karen.kuhn@qwest.com

Professional Development Director

Wendy Cowley – Salt Lake City Chapter
whcowley@regence.com

Education Director

Louise Anderson – Jackson Chapter
landerson@mauricejoseph.com

Corporate Advisor

Michelle Lovatt – Richmond Chapter
mlovatt@richmondva.org

Executive Director

Tara Ross
tara@executivewomen.org

CORPORATE HEADQUARTERS

515 South 700 East
Suite 2A
Salt Lake City, Utah 84102
Phone: 801-355-2800
Fax: 801-355-2852

POSTINGS

The following firms are being considered for membership in the Philadelphia Chapter EWI. If no written objections are received from an executive of a Member Firm within ten (10) days of the posting, the Membership Committee will contact the firm.

FIRM	MAJOR	MINOR
Ananda	Health and Recreation	Health Spa
Bovis Lend Lease	Construction Service	Construction Management
Moshulu Restaurant	Restaurants	Restaurant
Progressive Insurance	Insurance	Automobile Insurance
Tengion	Pharmaceutical	Pharmaceutical Mfg/Research
Wells Fargo Financial Acceptance	Finance	Banking/Commercial

PLEASE JOIN US IN EXTENDING OUR HEARTFELT THANKS TO THE BELOW FIRMS AND GUESTS FOR THEIR SUPPORT OF OUR SILENT AUCTION

Donated Item	Company
Philly Pops "Show Stoppers" Tickets & Dinner at Kimmel Center	Alfa Laval Biokinetics Inc
\$100 Gift Certificate & 3 Personal training sessions	Ananda Spa
Evaluation of Firm's Brand & Gift Basket	Bowhaus Designs
signed book "Lazy B" by Sandra Day O'Connor	Boys Club of America
2 Phillies Tickets Phillies vs. Giants May 7th Club Seats & dinner	BPG Industries
\$200 Tiffany's Gift Certificate	Contemporary Staffing Solutions
Two Phillies Tickets April 8th, Phillies vs. LA Dodgers	First Trust Bank
Golf lesson by PGA Professional	Golf Academy
Rock Climbing 3 hours of Personal Instruction and unlimited climbs	Hepburn, Wilcox, Hamilton & Putnam
Monte Carlo Living Room Gift Certificate \$100	Monte Carlo Living Room
Brunch at the Moshulu	Moshulu Restaurant
4 Phillies Tickets	New York Life
Dinner and Movie	New York Life
Men's Golf shirt and Benjamin Franklin Quote Book	PCVB
Women's Golf shirt and Benjamin Franklin Quote Book	PCVB
Overnight stay-Philadelphia Union League + Dinner at Cadence	Philadelphia Union League
PNC Bank Gift Basket &	PNC Bank
\$50 Positano Gift Certificate	Positano Restaurant
\$100 Gift Certificate to Bloomingdales & Tote	PureNSimple Productions
\$100 Macy's Gift Certificate	Teri Maloney

PUBLISHERS CORNER -

CHAPTER WEBSITE: We are very happy to announce the launching of our Chapter website: www.ewiphiladelphia.org You will have to forgive me. At this writing, it is not completely up-to-date regarding our next membership meeting. Also, I am awaiting the inclusion of additional links, so, while I invite you to visit our site, please keep in mind it is not totally up and running yet. Of course, comments/suggestions are welcome.

ADVERTISEMENTS: Check out our Golf Clinic Ad in the Philadelphia Business Journal (3/24 and 3/31 issues). Registration forms will be available shortly.

A CELEBRITY AMONGST US: Speaking of the Business Journal, you must check out the "People" Section of this week's issue featuring our very own Mary Porcelli of Bowhaus Design Groupe. Great article Mary. Congratulations!